



Eastern Hills Senior High School

Presented by
Raelene Infanti - Deputy Principal
Charlotte Edwards - Career Practitioner
Cindy Kross – VET Coordinator
Scott Baker – SS Program Coordinator



Year 11 Course Information for 2025



By the end of this session.....

You will know;

- **What the WACE is and why you must select certain subjects/courses.**
- **Types of courses you can choose.**
- **Pathway options.**
- **Courses offered at Eastern Hills SHS.**
- **Certificates offered inside and outside of Eastern Hills SHS.**
- **How many courses you are required to select.**
- **Where to find more information.**
- **Who to speak with at EHSHS for help.**
- **When your selections are due and how to put them into SSO.**





WACE

Western Australian Certificate of Education (WACE)

- The Western Australian Certificate of Education (WACE) is awarded to students who have successfully completed senior secondary schooling in WACE studies and have met the WACE requirements.
- Study towards the WACE can be undertaken over a lifetime.

WASSA

Western Australian Statement of Student Achievement (WASSA)

- formally records a student's achievement in every course, qualification and program that the student has completed in senior secondary schooling





WACE requirements

Students must:

- complete one of three course combination options (or Pathways)
 - **ATAR** - complete at least four Year 12 ATAR courses* OR
 - **General** - complete at least five Year 12 General courses and/or ATAR courses or equivalent OR
 - **VET** - complete a Certificate II (or higher) VET qual in combination with ATAR, General or Foundation courses
- **Achieve OLNA** (by pre-qualifying for OLNA with a NAPLAN Band of 8 or higher, or by sitting OLNA in Year 10, 11 or 12.)
- **Complete 20 units (A,B,C,D or E)** (4 units of English or Literature and a List A and List B in Year 12.)
- **Achieve minimum of 14 C's (A,B or C)** (or completing a full Certificate qualification.)





Study options / Pathways

Students are offered three study options which they can mix and match:

- WACE courses (ATAR, General) – (Foundation & Preliminary)
- VET Certificates
- Endorsed programs.





ATAR - Australian Tertiary Admission Rank courses

- ATAR courses are for students needing an ATAR Rank and wishing to apply directly to University at the end of Year 12.
- There are written examinations for all ATAR courses.
- There are practical examinations for practical based ATAR courses.
Students must complete both examinations in these courses.
- Students must complete the Year 12 WACE External Exam, or they will not receive any credit for the course for Year 12 and the subject won't contribute towards their WACE.



ATAR courses @ EHSHS

English	Biology
Literature	Chemistry
Music #	Human Biology
Media Production & Analysis	Physics
Mathematics Specialist	Psychology
Mathematics Methods	Geography
Mathematics Applications	Italian #
Health Studies	Modern History
Physical Education Studies #	

Practical Exams Included

ATAR Pathway Requirements



(6 Courses, 2 Reserves)

1. Select ATAR English or ATAR Literature.
2. Select another 4 ATAR Courses.
3. Make a 6th Selection. This can be an ATAR Course, General Course or VET Certificate.
4. Make 2 Reserve selections. R1 and R2 if paper selections.
5. Included in the selections must be a **List A and a List B** course. List B Course codes on the Subject Selection Online (SSO) Platform will have a *.



For more information refer to the 2025 Year 11 Course Information Handbook on the school Website.



General Courses

- No exams.
- have an externally set task (EST) completed by all students in Year 12 for moderation purposes.
- Designed for students who are typically aiming to enter further vocationally based training or the workforce directly from school.





General courses @ EHSHS

English	Human Biology
Literature	Health Studies
Design (Graphics)	Outdoor Education
Media Production & Analysis	Physical Education Studies
Music	Children, Family & Community
Visual Arts	Food Science & Technology
Drama	Mathematics Essentials
Career and Enterprise	Automotive Engineering & Technology
Business Mgt & Enterprise	Woodwork - Materials Design & Technology
Science in Practice	Metalwork - Materials Design & Technology





Transitional/General Pathway Requirements

(6 Courses, 2 Reserves)

1. Select General English or General Literature.
2. Select another 4 General Courses.
3. Make a 6th Selection. This can be another General Course or a VET Certificate.
4. Make 2 reserve selections. R1 and R2 on paper selection.
5. Included in the selections must be a **List A** and a **List B** course.

For more information refer to the
2025 Year 11 Course Information Handbook on the school Website.



Vocational Education and Training (VET)



VET is nationally recognised and enables students to gain qualifications for all types of employment, and specific skills to help them in the workplace or in further training.



VET courses @ EHSHS

Certificate II in Visual Arts
Certificate II in Creative Industries (Media)
Certificate II in Tourism
Certificate II in Horticulture (Certificate II in Sampling and Measurement)
**Certificate II in Sport and Recreation
**Certificate II in Sport and Recreation (AFL Focus)
**Certificate II in Hospitality

** These Certificates may have an application and interview process entry requirement.



VET Pathway Requirements

(6 Courses, 2 Reserves)

1. Select General English or General Literature.
2. Select another 3 General Courses.
3. Make a 5th and 6th Selection from the VET Certificates.
4. Make 2 reserve selections (R1 and R1 if submitting paper form).
5. Included in the selections must be a **List A** and a **List B** course.

For more information refer to the
2025 Year 11 Course Information Handbook on the school Website.



VET contribution to the WACE



- A completed Certificate II contributes 2 Year 11 C grades and 2 Year 12 C grades to WACE.

Courses and Certificates	Year 11 Unit Credits	Year 12 Unit Credits
ATAR English (C)	2	2
General Mathematics Essentials (B)	2	2
General Automotive Engineering & Technology (B)	2	2
General Food Science & Technology (A)	2	2
Certificate II in Visual Arts (completed)	2	2
Certificate II in Tourism (completed)	2	2
20 Units completed ✓(24) 14 C's or equiv ✓(24)	12	12

- 14 C Grade requirement for WACE allows **8 C's** to come from VET Certificates.
- Partially completed Certificates do not count towards WACE. Students must complete the entire Certificate.



NNEI and TAFE Profile Certificates



NNEI – Certificate II in Automotive Vehicle Servicing – Morley SHS

NNEI – Certificate II in Construction Pathways – Girrawheen SHS

NNEI – Certificate II in Retail – Girrawheen SHS

NNEI – Certificate II in Cookery – Dianella SHS

NNEI – Certificate II in Applied Fashion – Dianella SHS

NNEI – Certificate III Screen and Media – Dianella SHS

- Trade Centre 1 day a week over Year 11 and 12
- Students/Parents responsible for transport to and from TTC
- Select it on selection sheet or SSO – Application Form will follow later.

TAFE Profile Certificates (Funded)

- North and South Metro TAFE
- Mixture of 1 and 2 days a week Certificates.
- Mixture of 1 and 2-year Certificate durations.
- Applications are made online directly to the TAFE (Ms Edwards – Career Practitioner / Ms Kross VET Coordinator can assist).
- Not recommend for ATAR students.



Certificate II in Automotive Servicing Technology Morley Senior High School



The Automotive Pre-Apprenticeship is a flexible learning program available to students who want to gain direct entry into the world of work or training while still working towards their secondary graduation. The program is suitable for students who have a passion and a commitment to the automotive industry.

Students will have the opportunity of making a successful transition into full time automotive apprenticeships, other traineeships, further TAFE training or full-time employment.





Certificate II Construction Pathways Girrawheen Senior High School

This qualification is designed by the Construction Industry to reflect the role of entry level employees to perform routine tasks under direct supervision. The Trade Training Centre operates in partnership with North Metro TAFE and provides an environment to complete study whilst remaining in secondary school.



Certificate II in Cookery Dianella Secondary College

The Dianella Secondary College Kitchen Operations Trade Training Centre offers students in Year 11 who are interested in the hospitality industry the opportunity to work in a commercial kitchen and café. This program is suitable for students who have a passion for hospitality and would like to pursue an industry pathway.

The pathway links include:

- Certificate III Hospitality
- Certificate III Commercial Cookery
- Hospitality industry apprenticeship





Endorsed Programs

1. Authority-developed endorsed programs (ADWPL)
 2. Provider-developed endorsed programs (Bronze Medallion, AMBE, Army Cadets, Employment Advantage/Social Skills Online courses)
- The list of endorsed programs is available on the Authority website.

<https://senior-secondary.scsa.wa.edu.au/vet/endorsed-programs>



Disability Adjustments

- Evidence of a disability, diagnosed by a specialised medical professional, is required for adjustment.
- The *Guidelines for disability adjustments for timed assessments* is available on the Authority website at <https://senior-secondary.scsa.wa.edu.au/assessment/disability-adjustment-guidelines>.

Adjustments typically requested for approval by principals include:

- rest breaks and provision for a pause button
- extra time to work
- a reader/ use of e reader
- scribe assistance for the writing component
- use of a support person for the reading and numeracy components
- special formats.

Changing courses in Years 11

- Changes to preferences can be made right up until the end of this year. Once the timetable has been constructed restrictions due to available courses and numbers will apply.

Certificate Changes

- Students can change into a Certificate up to the end of Term 1 in Year 11. After this date the RTO will not accept any more enrolments.

Courses Changes

- Students can change from one course to another course at the end of Semester 1 and the end of Semester 2 in Year 11.
- There are points in the semester after which students should not change course because it would be unlikely they could complete the assessment program. (SCSA endorsed close dates).

Transitional/General and VET Pathway Directions



- Apprenticeships
- Traineeships
- Employment
- Further courses at TAFE or Private Training Providers (Cert I's to Diplomas, Advanced Diplomas)
- University Pathway (Cert IV completion equals university entrance)





TIPS - Where to start?

Relax! – Subject selection is not about choosing a Career for Life.

Students are advised to select;

- Subjects they enjoy,
- Subjects they are good at,
- Subjects that may help them in their future career pathway.

Don't pick a subject because;

- A friend is doing it or a particular teacher MAY be teaching it (if you have no interest in it).
- Do your research.



Typical questions from students

How do I know what I want to do in two years? Study? Work? Travel?

What if I change my mind?

What if I don't get the ATAR I need or the course I want?



Careers at Eastern Hills

- Identifying your skills, interest and values
- Identifying “what employers want”
- Industry connections
- Researching my options – TAFE, University, and Employers
- Resume Writing
- Career Planning
- Portfolio Development



The Successful Student



- Attendance
- Punctual
- Prepared
- “Have a go” attitude
- Meets Deadlines Assignments/homework
- Completes study and revision
- Reads the Syllabus/course outline
- Develops strong relationships.(seeks help)
- Has a support network
- Has a balanced life
- Pays Attention in class
- Does not procrastinate
- Sets goals
- Uses every minute of class time effectively
- Focused



CARE

PRIDE

GROWTH

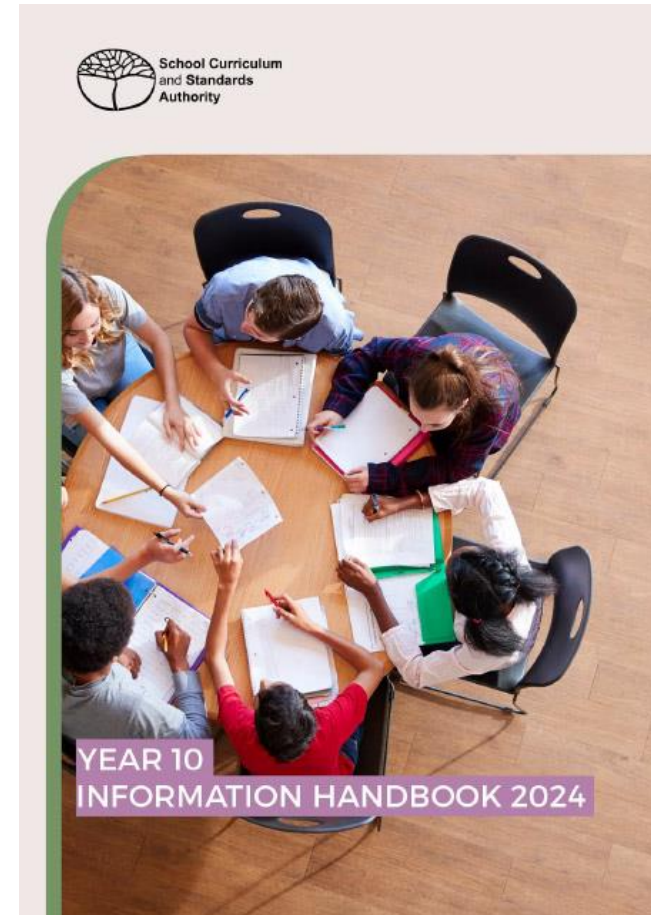
How can parents help?

- **DON'T WORRY** – OPTIONS ARE PLENTY.
- Ask for help.
- Listen to your student, what interests them and where they see themselves in the future.
- Discuss your work experiences with them.
- Explore all the opportunities for future learning i.e. Year 12, University, TAFE, apprentice positions etc.
- Ask them about what they are doing in their classroom and include a link to a career question.
- Be open minded
- Provide opportunities to develop responsibility.
- Communicate with teachers.

KEEP THE DISCUSSION GOING!



Information for students



[Years 11 and 12 | Year 10 Information Handbook \(scsa.wa.edu.au\)](https://scsa.wa.edu.au)
Copy available on the School website





Subject Selections Online (SSO)

<https://client.subjectselectiononline.com.au/?school=2ggg8>



Parents and Students will receive a login info sheet and a hard copy of Preliminary Selection Sheet. If you cannot do selections online please complete and sign the selection sheet and return it to Student Services by **Wednesday 26 June**.

All other supporting information will be available on the school website. This includes the Course Information Handbook. [Years 11-12 - Eastern Hills SHS \(ehshs.wa.edu.au\)](https://ehshs.wa.edu.au)

Unique Student Identifier (USI) – 10 Character Identifier all students need to obtain and include in their online selections. <https://www.usi.gov.au/>



You are currently in View Only mode. To make changes to student selections, click the Edit button

[Edit](#)

SUBJECT SELECTION

[Show Answers](#) 

Eastern Hills Senior High
School

Combination Pathway

NNEI Certificate Course

Unique Student Identifier
(USI)

What Next?

1

Eastern Hills Senior High School



Welcome to Course Selections for

Year 11 in 2025

It is important that all students make the most of the opportunities offered to you in Years 11 and 12. To do this it is essential that you make informed choices, which result in you selecting the most appropriate course. The right choices now will prepare you for future success in your chosen field of work or study.





Years 11-12



HOME | TEACHING & LEARNING | YEARS 11-12

[2024 Year 11 Course Selection Sheet](#)

2024 Year 11 Course Information Handbook



2024 Year 11 Students SCSA Handbook



2024 Year 11 Course Information PowerPoint



NNEI Trade Centre Training Application Doc 2023



2023 Year 11 Course Information Handbook



TEACHING & LEARNING

CONNECT - PARENT/TEACHER
COMMUNICATION



YEAR 7



YEAR 8



for a list of course options.

Due to frequently changing available options, we encourage current and prospective parents and students to contact one of our Senior School Team below.

STUDENT CAREERS & VET



Support Team



Ms Raelene Infanti

Deputy Principal

raelene.infanti@education.wa.edu



Ms Charlotte Edwards

Career Practitioner

charlotte.edwards@education.wa.edu.au



Mr Scott Baker

HOLA HPE

scott.baker@education.wa.edu



Ms Cindy Kross

VET Coordinator

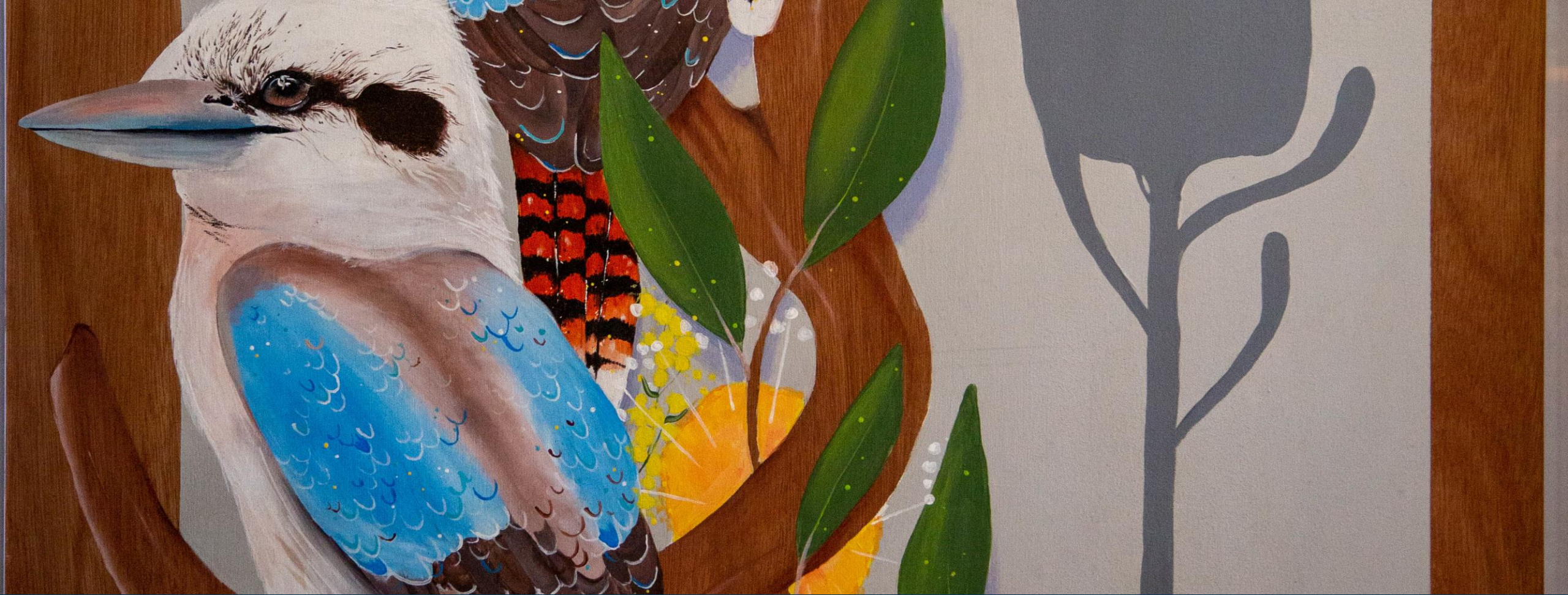
cindy.kross@education.wa.edu.au

By the end of this session.....



You will know;

- What the WACE is and why you must select certain subjects/courses. **WA Certificate of Education (Complete 20 units, minimum 14 C's, OLNA, 4 units English, List A and List B in Year 12).**
- Types of courses you can choose. **ATAR, General or VET.**
- Pathway options. **ATAR, Transitional/General or VET.**
- Courses offered at Eastern Hills SHS. **See selection sheet.**
- Certificates offered inside and outside of Eastern Hills SHS. **See selection sheet.**
- How many courses you are required to select. **6 courses and 2 reserves.**
- Where to find more information. **EHSHS Website. Parents. Internet.**
- Who to speak with at EHSHS for help. **Support Team. Teachers. HOLA's. Form Teachers.**
- When your selections are due and how to put them into SSO. **Wednesday 26 June 2024. Use the instructions on the back of your selection sheet to log into SSO.**



Thank you.



Links



www.scsa.wa.edu.au



info@scsa.wa.edu.au



<https://facebook.com/SCSAWA>