



Eastern Hills Senior High School

Presented by
Raelene Infanti
Deputy Principal

Mike Buselich
Career Practitioner



Year 11 Course Information for 2024

By the end of this session.....



You will know;

- **What the WACE is and why you must select certain subjects/courses.**
- **Types of courses you can choose.**
- **Pathway options.**
- **Courses offered at Eastern Hills SHS.**
- **Certificates offered outside of Eastern Hills SHS.**
- **How many courses you are required to select.**
- **Where to find more information.**
- **Who to speak with at EHSHS for help.**
- **When your selections are due and how to put them into SSO.**



WACE

Western Australian Certificate of Education (WACE)

- The Western Australian Certificate of Education (WACE) is awarded to students who have successfully completed senior secondary schooling in WACE studies and have met the WACE requirements.
- Study towards the WACE can be undertaken over a lifetime.

WASSA

Western Australian Statement of Student Achievement (WASSA)

- formally records a student's achievement in every course, qualification and program that the student has completed in senior secondary schooling

WACE requirements

Students must:

- complete one of three course combination options (or Pathways)
 - **ATAR** - complete at least four Year 12 ATAR courses* OR
 - **General** - complete at least five Year 12 General courses and/or ATAR courses or equivalent OR
 - **VET** - complete a Certificate II (or higher) VET qual in combination with ATAR, General or Foundation courses
- **Achieve OLNA** (by pre-qualifying for OLNA with a NAPLAN Band of 8 or higher, or by sitting OLNA in Year 10, 11 or 12.)
- **Complete 20 units (A,B,C,D or E)** (4 units of English or Literature and a List A and List B in Year 12.)
- **Achieve minimum of 14 C's (A,B or C)** (or completing a full Certificate qualification.)

Study options / Pathways

Students are offered three study options which they can mix and match:

- WACE courses (ATAR, General) — (Foundation & Preliminary)
- VET Certificates
- Endorsed programs.

ATAR - Australian Tertiary Admission Rank courses

- ATAR courses are for students needing an ATAR Rank and wishing to apply directly to University at the end of Year 12.
- There are written examinations for all ATAR courses.
- There are practical examinations for practical based ATAR courses.
Students must complete both examinations in these courses.
- Students must complete the Year 12 WACE External Exam, or they will not receive any credit for the course for Year 12 and the subject won't contribute towards their WACE.

ATAR courses @ EHS

English	Biology
Literature	Chemistry
Music #	Human Biology
Media Production & Analysis	Physics
Mathematics Specialist	Economics
Mathematics Methods	Geography
Mathematics Applications	Modern History
Health Studies	Politics and Law
Physical Education Studies #	Italian #

Practical Exams Included

ATAR Pathway Requirements



(6 Courses, 2 Reserves)

1. Select ATAR English or ATAR Literature.
2. Select another 4 ATAR Courses.
3. Make a 6th Selection. This can be an ATAR Course, General Course or VET Certificate.
4. Make 2 Reserve selections. R1 and R2 if paper selections.
5. Included in the selections must be a **List A and a List B** course. List B Course codes on the Subject Selection Online (SSO) Platform will have a *.



For more information refer to the
2024 Year 11 Course Information Handbook on the school Website.



General Courses

- No exams.
- have an externally set task (EST) completed by all students in Year 12 for moderation purposes.
- Designed for students who are typically aiming to enter further vocationally based training or the workforce directly from school.



General courses @ EHSHS

English	Human Biology
Literature	Health Studies
*Design (Computer Graphics)	Outdoor Education
Drama	Physical Education Studies
Media Production and Analysis	Children, Family & Community
Music	Food Science Technology
Visual Arts	Mathematics Essentials
Computer Science	Automotive Engineering and Technology
Career and Enterprise	Woodwork - Materials Design Technology
Business Mgt & Enterprise	Metalwork - Materials Design Technology
Integrated Science	*Design (Photography)

* Same course, different context. Can only use credit for one course.

Transitional/General Pathway Requirements

(6 Courses, 2 Reserves)

1. Select General English or General Literature.
2. Select another 4 General Courses.
3. Make a 6th Selection. This can be another General Course or a VET Certificate.
4. Make 2 reserve selections. R1 and R2 on paper selection.
5. Included in the selections must be a **List A** and a **List B** course.

For more information refer to the
2024 Year 11 Course Information Handbook on the school Website.

Vocational Education and Training (VET)



VET is nationally recognised and enables students to gain qualifications for all types of employment, and specific skills to help them in the workplace or in further training.



VET courses @ EHSHS

Certificate II in Visual Arts
Certificate II in Creative Industries (Media)
Certificate II in Applied Digital Technologies
Certificate II in Tourism
Certificate II in Horticulture (Certificate II in Sampling and Measurement)
Certificate II in Financial Services
**Certificate II in Sport and Recreation
**Certificate II in Sport and Recreation (AFL Focus)
**Certificate II in Hospitality

**** These Certificates may have an application and interview process entry requirement.**



VET Pathway Requirements

(6 Courses, 2 Reserves)

1. Select General English or General Literature.
2. Select another 3 General Courses.
3. Make a 5th and 6th Selection from the VET Certificates.
4. Make 2 reserve selections (R1 and R1 if submitting paper form).
5. Included in the selections must be a **List A** and a **List B** course.

For more information refer to the
2024 Year 11 Course Information Handbook on the school Website.



VET contribution to the WACE



- A completed Certificate II contributes 2 Year 11 C grades and 2 Year 12 C grades to WACE.

Courses and Certificates	Year 11 Unit Credits	Year 12 Unit Credits
ATAR English (C)	2	2
General Mathematics Essentials (B)	2	2
General Automotive Engineering & Technology (B)	2	2
General Food Science & Technology (A)	2	2
Certificate II in Visual Arts (completed)	2	2
Certificate II in Tourism (completed)	2	2
20 Units completed ✓(24) 14 C's or equiv ✓(24)	12	12

- 14 C Grade requirement for WACE allows 8 C's to come from VET Certificates.
- Partially completed Certificates do not count towards WACE. Students must complete the entire Certificate.



NNEI and TAFE Profile Certificates



NNEI – Certificate II in Automotive Vehicle Servicing – Morley SHS

NNEI – Certificate II in Construction Pathways – Girrawheen SHS

NNEI – Certificate II in Cookery – Dianella SHS

- Trade Centre 1 day a week over Year 11 and 12
- Students/Parents responsible for transport to and from TTC
- Select it on selection sheet or SSO – Application Form will follow later.

TAFE Profile Certificates (Funded)

- North and South Metro TAFE
- Mixture of 1 and 2 days a week Certificates.
- Mixture 1 and 2 year Certificate durations.
- Applications are made online directly to the TAFE. (Ms Bell – VET Coordinator can assist).
- Not recommend for ATAR students.





Certificate II in Automotive Servicing Technology Morley Senior High School

The Automotive Pre-Apprenticeship is a flexible learning program available to students who want to gain direct entry into the world of work or training while still working towards their secondary graduation. The program is suitable for students who have a passion and a commitment to the automotive industry.

Students will have the opportunity of making a successful transition into full time automotive apprenticeships, other traineeships, further TAFE training or full-time employment.





Certificate II Construction Pathways

Girrawheen Senior High School

This qualification is designed by the Construction Industry to reflect the role of entry level employees to perform routine tasks under direct supervision. The Trade Training Centre operates in partnership with North Metro TAFE and provides an environment to complete study whilst remaining in secondary school.

Certificate II in Cookery

Dianella Secondary College

The Dianella Secondary College Kitchen Operations Trade Training Centre offers students in Year 11 who are interested in the hospitality industry the opportunity to work in a commercial kitchen and café. This program is suitable for students who have a passion for hospitality and would like to pursue an industry pathway.

The pathway links include:

- Certificate III Hospitality
- Certificate III Commercial Cookery
- Hospitality industry apprenticeship





FREMANTLE EDUCATION CENTRE – Fee for service

- Fremantle Education Centre (FEC) is a Registered Training Organisation (RTO) delivering a range of Certificate II, III and IV Nationally Recognised VET Qualifications to schools across Western Australia.
- FEC is situated close to all the public transport systems in the heart of Fremantle.

BUSINESS:

Certificate II Workplace Skills

Certificate III Business

Certificate IV Business

Diploma of Business

EDUCATION SUPPORT:

Certificate III in School Based

Education Support

Certificate IV in School Based

Education Support

EARLY CHILDHOOD EDUCATION & CARE:

Certificate III Early Childhood

Education & Care

Diploma Early Childhood Education & Care

COMMUNITY SERVICES:

Certificate II Community Services

Certificate III Community Services

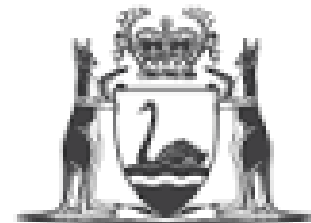
Certificate IV Community Services

CRT – NORTHAM VETDSS (online)

- 52895WA Certificate IV in Preparation for Health and Nursing Studies
- ACM20121 Certificate II in Animal Care



**Central
Regional**



GOVERNMENT OF
WESTERN AUSTRALIA

Endorsed Programs

1. Authority-developed endorsed programs (ADWPL)
 2. Provider-developed endorsed programs (Bronze Medallion, AMBE, Army Cadets, Employment Advantage/Social Skills Online courses)
- The list of endorsed programs is available on the Authority website.

<https://senior-secondary.scsa.wa.edu.au/vet/endorsed-programs>

Engagement Pathway

For students who are unlikely to meet the requirements for WACE and need extra support.

These students have access to our:

- Literacy Support Program
- Numeracy Support Program
- Education Support Program includes the Certificate I in AgriFoods.
- Workplace Learning Program



Please speak to Ms Edwards for an appointment.

Charlotte.Edwards@education.wa.edu.au

Disability Adjustments

- Evidence of a disability, diagnosed by a specialised medical professional, is required for adjustment.
- The *Guidelines for disability adjustments for timed assessments* is available on the Authority website at <https://senior-secondary.scsa.wa.edu.au/assessment/disability-adjustment-guidelines>.

Adjustments typically requested for approval by principals include:

- *rest breaks and provision for a pause button
- *extra time to work
- a reader
- scribe assistance for the writing component
- use of a support person for the reading and numeracy components
- special formats.

Changing courses in Years 11

- Changes to preferences can be made right up until the end of this year. Once the timetable has been constructed restrictions due to available courses and numbers will apply.

Certificate Changes

- Students can change into a Certificate up to the end of Term 1 in Year 11. After this date the RTO will not accept any more enrolments.

Courses Changes

- Students can change from one course to another course at the end of Semester 1 and the end of Semester 2 in Year 11.
- There are points in the semester after which students should not change course because it would be unlikely they could complete the assessment program. (SCSA endorsed close dates).

Transitional/General and VET Pathway Directions



- Apprenticeships
- Traineeships
- Employment
- Further courses at TAFE or Private Training Providers (Cert I's to Diplomas, Advanced Diplomas)
- University Pathway (Cert IV completion equals university entrance)





TIPS - Where to start?

Relax! – Subject selection is not about choosing a Career for Life.

Students are advised to select;

- Subjects they enjoy,
- Subjects they are good at,
- Subjects that **MAY** help them in their future career pathway.

Don't pick a subject because;

- A friend is doing it or a particular teacher **MAY** be teaching it (if you have no interest in it).
- Do your research.

Typical questions from students

How do I know what I want to do in two years? Study? Work? Travel?

What if I change my mind?

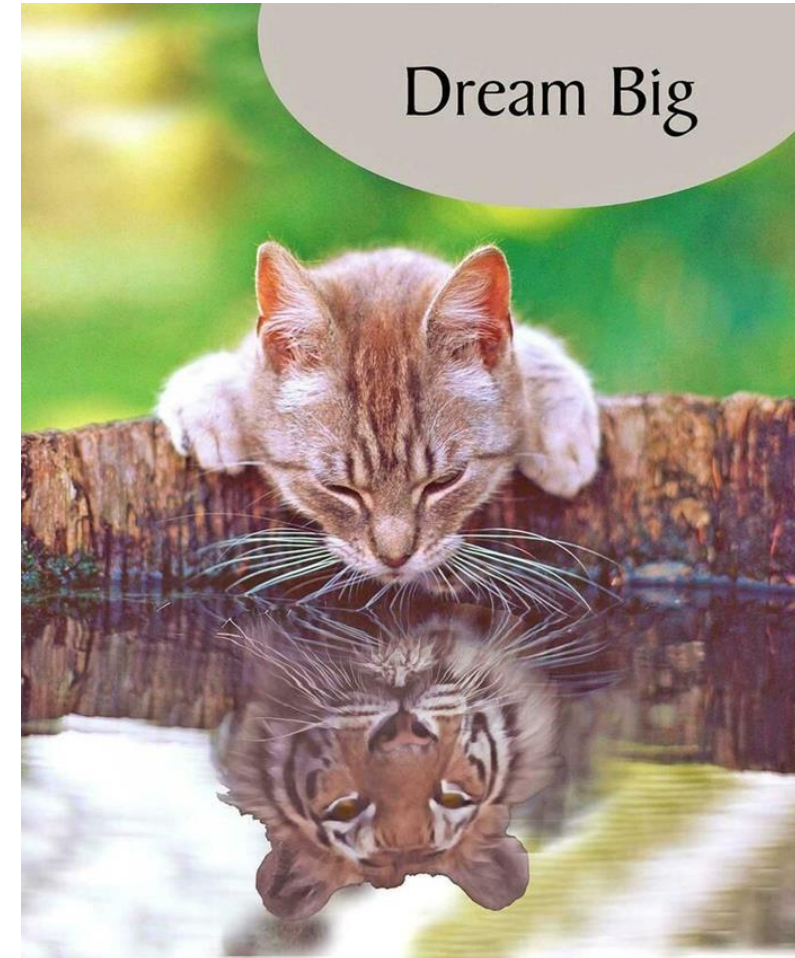
What if I don't get the ATAR I need or the course I want?

Now what?



Research and decide am I:

- ATAR Pathway
- Transitional/General Pathway
- VET Pathway



Case study



Employment – Graduate Program



Bachelor of Science (Nursing) 3.5 years



HLT54115 Diploma of Nursing 1.5 Years



DURING YEAR 11 and 12

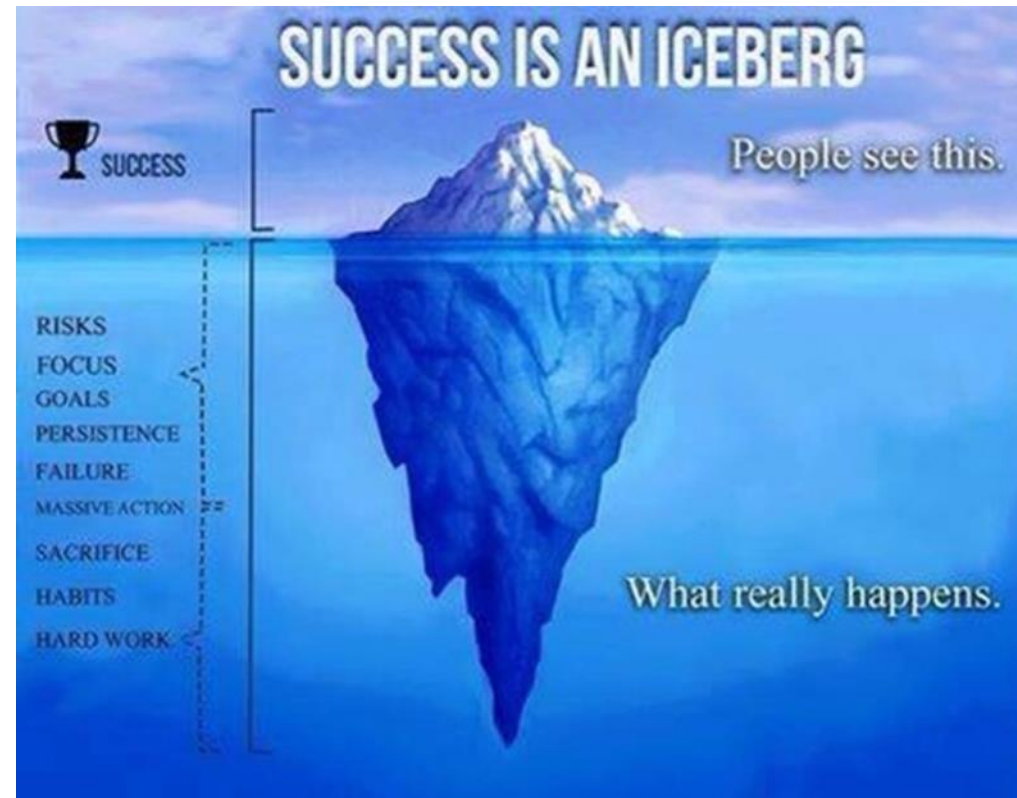
**52831WA Certificate IV in Preparation for Health and Nursing Studies
+ ENGLISH**



The Successful student



- Attendance
- Punctual
- Prepared
- “Have a go” attitude
- Meets Deadlines Assignments/homework
- Completes study and revision
- Reads the Syllabus/course outline
- Develops strong relationships.(seeks help)
- Has a support network
- Has a balanced life
- Pays Attention in class
- Does not procrastinate – time management
- Sets goals
- Focused



How can parents help?

- **DON'T WORRY** – OPTIONS ARE PLENTY
- Listen to your children about what interests them and where they see themselves in the future
- Discuss your work experiences with them.
- Explore all the opportunities for future learning. i.e. Year 12, University, TAFE, apprentice positions etc (Careers Onenote)
- Ask them about what they are doing in their classroom and include a link to a career question
- Be open minded
- Provide opportunities to develop responsibility
- Communicate with teachers

Use the [Subject Selection Calculator](#)

KEEP THE DISCUSSION GOING!



Information for students



Years 11 and 12 | Year 10 Information Handbook (scsa.wa.edu.au)
Copy available on the School website



Websites for students and parents



The screenshot shows the SCSA website's 'STUDENT INFORMATION' section. The header includes the Government of Western Australia logo, the SCSA logo, and a search bar. The main navigation bar lists 'The Authority', 'Kindergarten to Year 10', 'Years 11 and 12', 'Student Information', and 'Parents and Community'. Below this, a secondary navigation bar includes 'Home', 'Student Portal', 'Getting Organised', 'Curriculum', 'Examinations and Testing', 'Certification and Post School', and 'FAQs'. The main content area features a large heading 'STUDENT INFORMATION' and a row of five colorful icons with labels: 'STUDENT PORTAL' (orange), 'GETTING ORGANISED' (blue), 'CURRICULUM' (green), 'EXAMINATIONS AND TESTING' (purple), and 'FREQUENTLY ASKED QUESTIONS' (teal). Below this, a section titled 'STUDENT PORTAL' provides text: 'The student portal is a space for Year 12 students to check and access personal information that relates to their Western Australian Certificate of Education (WACE). You need to have your WA student number – which you can find out through your school – and a password to access the portal. When you visit the portal for the first time you will be prompted to change your password.'

The screenshot shows the SCSA website's 'Parents and Community' section. The header is identical to the previous screenshot. The main navigation bar lists 'The Authority', 'Kindergarten to Year 10', 'Years 11 and 12', 'Student Information', and 'Parents and Community'. Below this, a secondary navigation bar includes 'Home', 'What Will My Child Learn?', 'How Will My Child Be Assessed?', 'How is My Child Progressing?', and 'Contacts'. The main content area features a large image of a child blowing a bubble, with a white box containing the text 'Parents and Community'. Below the image, a section titled 'Who are we?' is visible.



Subject Selections Online (SSO)

<https://client.subjectselectiononline.com.au/?school=2ggg8>



Parents and Students will receive a login info sheet and a hard copy of Preliminary Selection Sheet. If you cannot do selections online please complete and sign the selection sheet and return it to Student Services by **Wednesday 28 June**.

All other supporting information will be available on the school website. This includes the Course Information Handbook. [Years 11-12 - Eastern Hills SHS \(ehshs.wa.edu.au\)](https://ehshs.wa.edu.au)



Unique Student Identifier (USI) – 10 Character Identifier all students need to obtain and include in their online selections. <https://www.usi.gov.au/>

Years 11-12 - Eastern Hills SHS

SSO

client.subjectselectiononline.com.au/student

LenovoIMSSHome | Eastern Hill...SSOIKONFit Foodie FindsWellness Blogs for...aXcelerate - Dashb...Remote Desktop W...NAPLAN 2022Home | Compassu



Click here to exit the student screen

Act as Rae Infanti

You are currently in View Only mode. To make changes to student selections, click the Edit button

SUBJECT SELECTION

Hide Answers

Eastern Hills Senior High School

ATAR Pathway


NNEI Certificate Course

Unique Student Identifier (USI)

What Next?

1

Eastern Hills Senior High School



Welcome to Course Selections for

Year 11 in 2024

It is important that all students make the most of the opportunities offered to you in Years 11 and 12. To do this it is essential that you make informed choices, which result in you selecting the most appropriate course. The right choices now will prepare you for future success in your chosen field of work or study.

When making your choices remember:

Your skills, abilities and interests are important; read any relevant guides and check any prerequisites for selected careers, Universities and other training providers, such as TAFE; and be realistic. Select courses which meet your needs and give you a

Your Selections

Eastern Hills Senior High School

Pathway Selection

Pathway

Generate Selection Report ^

You must choose at least 1 List B Course. List B Courses have an * at the beginning of their Course name.

Click here to exit the student screen

You are currently in Edit mode. Changes will be saved to the student's selections. Click View Only when done.

Eastern Hills Senior High School

General/Transitional Pathway

NNEI Certificate Course

Unique Student Identifier (USI)

What Next?

3. Make a 6th Selection. This can be another General Course or VET Certificate.

4. Included in the selections must be a **List A** and a **List B** course. List B Courses have a *.

5. Make 2 reserve selections from the General Course or VET Certificate list.

Let's get started!

! Select General English or General Literature

☐ G1ENG General English (G1ENG) ⓘ

☐ G1LIT General Literature (G1LIT)

! Select another 4 Courses

Click here to show selections...

! Make a 6th Selection and 2 Reserve Selections

1. Your 6th choice can be another Course or a Certificate.

2. Make two reserve selections.

Click here to show selections...

- A1HEA ATAR Health Studies (A1HEA) ⓘ
- A1HIM ATAR Human Biology (A1HIM) ⓘ
- A1LIT ATAR Literature (A1LIT) ⓘ
- A1MAA *ATAR Mathematics Applications (A1MAA) ⓘ
- A1MAM *ATAR Mathematics Methods (A1MAM) ⓘ
- A1MAS *ATAR Mathematics Specialist (A1MAS) ⓘ
- A1MDA ATAR Media Production and Analysis (A1MDA) ⓘ

3

Your Selections

► Eastern Hills Senior High School

[Pathway Selection](#)

Pathway

Generate Selection Report ^

Welcome
have an

Write

Access for students to Certificate courses at other NNEI



EASTERN HILLS

SENIOR HIGH SCHOOL

[ENROLMENTS](#)[SCHOOL TOURS](#)[CONTACT US](#)[!\[\]\(e3f8612927870f2e0f9f5989e6dd3064_img.jpg\) **Compass**](#)[CONNECT](#)[SSO LINK](#)

OUR SCHOOL

[PRINCIPAL'S MESSAGE](#)[OUR HISTORY](#)[SCHOOL BOARD](#)[SCHOOL ETHOS AND BUSINESS PLAN](#)[SCHOOL POLICY GUIDELINES](#)[STUDENT SERVICES SUPPORT](#)[DIFFS RUSHFIRE INFO](#)

ENROLMENTS

[REGISTER INTEREST](#)[SCHOOL TOURS](#)[YEAR 6 TRANSITION INFORMATION FOR PARENTS](#)

HELPFUL INFORMATION

[SCHOOL TIMES & TERM DATES](#)[UNIFORM SHOP AND DRESS CODE](#)[CANTEEN](#)[ATTENDANCE](#)[SCHOLARSHIPS](#)[PARENTS & CITIZENS ASSOCIATION](#)[CONTRIBUTIONS, FEES & CHARGES](#)

TEACHING & LEARNING

[CONNECT - PARENT/TEACHER COMMUNICATION](#)[YEAR 7](#)[YEAR 8](#)[YEAR 9](#)[YEAR 10](#)[YEARS 11-12](#)

NEWS, EVENTS & MEDIA

[SCHOOL NEWS](#)[GALLERY](#)



Years 11-12

[HOME](#) | [TEACHING & LEARNING](#) | [YEARS 11-12](#)



[2024 Year 11 Course Selection Sheet](#)

2024 Year 11 Course Handbook



2024 Year 11 Students SCSA Handbook



Year 11-12 Course Pathways Information



TEACHING & LEARNING

[CONNECT - PARENT/TEACHER
COMMUNICATION](#)



[YEAR 7](#)



[YEAR 8](#)



[YEAR 9](#)



[YEAR 10](#)



[YEARS 11-12](#)



Support Team



Ms Raelene Infanti

Deputy Principal (Any Form)

raelene.infanti@education.wa.edu



Mr Mike Buselich

Career Practitioner (10.3 and 10.4)

mike.buselich@education.wa.edu.au



Mr Scott Baker

HOLA HPE (10.1 and 10.2)

scott.baker@education.wa.edu



Ms Casey Rollnik

Year 10 Coordinator (10.5 and 10.6)

casey.rollnik@education.wa.edu.au



Amy Billingham (Any Form)

Senior School Program Coordinator

amy.billingham@education.wa.edu.au



Candice Bell (Any Form)

VET Coordinator

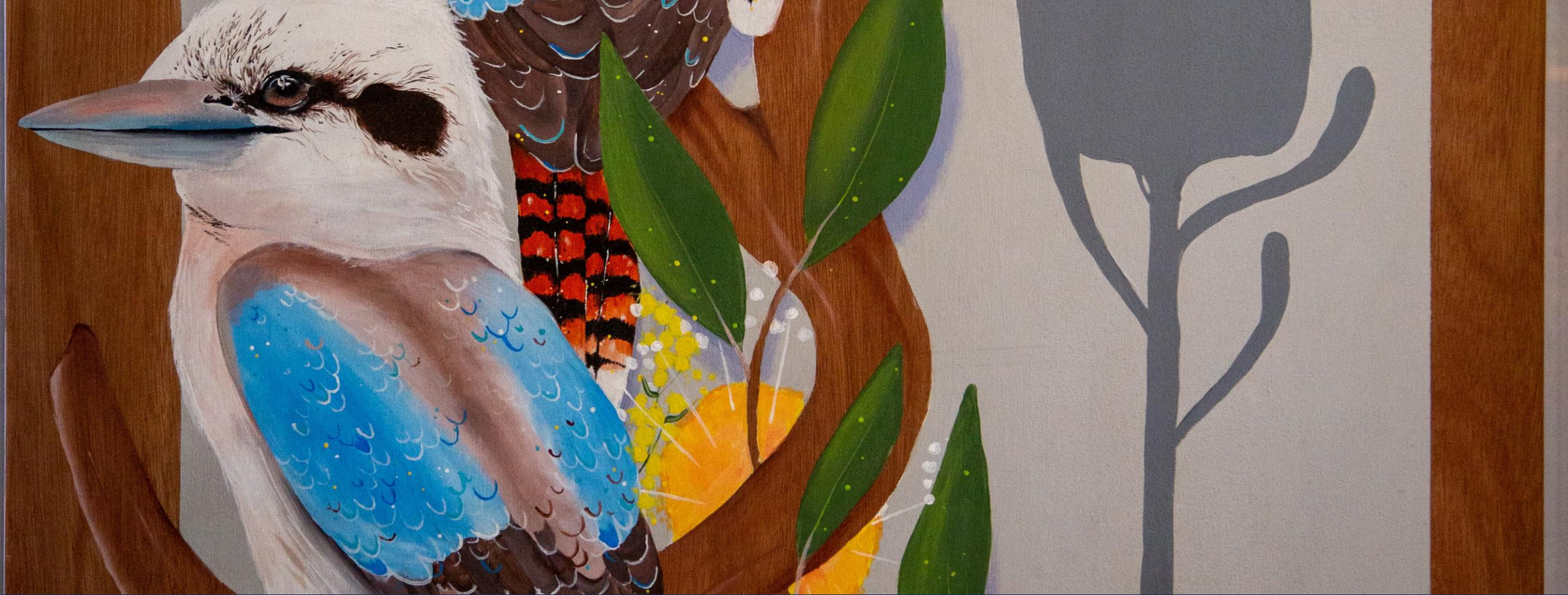
candice.bell@education.wa.edu.au

By the end of this session.....



You will know;

- What the WACE is and why you must select certain subjects/courses. **WA Certificate of Education (Complete 20 units, minimum 14 C's, OLNA, 4 units English, List A and List B in Year 12).**
- Types of courses you can choose. **ATAR, General or VET.**
- Pathway options. **ATAR, Transitional/General or VET.**
- Courses offered at Eastern Hills SHS. **See selection sheet.**
- Certificates offered outside of Eastern Hills SHS. **See selection sheet.**
- How many courses you are required to select. **6 courses and 2 reserves.**
- Where to find more information. **EHS SHS Website. Parents. Internet.**
- Who to speak with at EHS SHS for help. **Support Team. Teachers. HOLA's. Form Teachers.**
- When your selections are due and how to put them into SSO. **Wednesday 28 June 2023. Use the instructions on the back of your selection sheet to log into SSO.**



Thank you.



Links



www.scsa.wa.edu.au



info@scsa.wa.edu.au



<https://facebook.com/SCSAWA>



© School Curriculum and Standards Authority, 2023

This document—apart from any third party copyright material contained in it—may be freely copied, or communicated on an intranet, for non-commercial purposes in educational institutions, provided that the School Curriculum and Standards Authority is acknowledged as the copyright owner, and that the Authority's moral rights are not infringed.

Copying or communication for any other purpose can be done only within the terms of the *Copyright Act 1968* or with prior written permission of the School Curriculum and Standards Authority. Copying or communication of any third party copyright material can be done only within the terms of the *Copyright Act 1968* or with permission of the copyright owners.

Any content in this document that has been derived from the Australian Curriculum may be used under the terms of the [Creative Commons Attribution-Non Commercial 4.0 Australia licence](#).

HPRM 2023/20339